

INTRODUCTION

Low-energy dishwashing machines have long been recognized as a platform for dispensing chemicals. For the low-energy dishmachine service distributor revenues are predicated on the success or failure of the dishmachine's ability to dispense detergent, sanitizer and drying agent.

Knight's leadership position in chemical dispensing technology and our keen interest in developing chemical revenue opportunities for our customers helped inspire this exciting new chemical dispensing package.

THEORY OF OPERATION

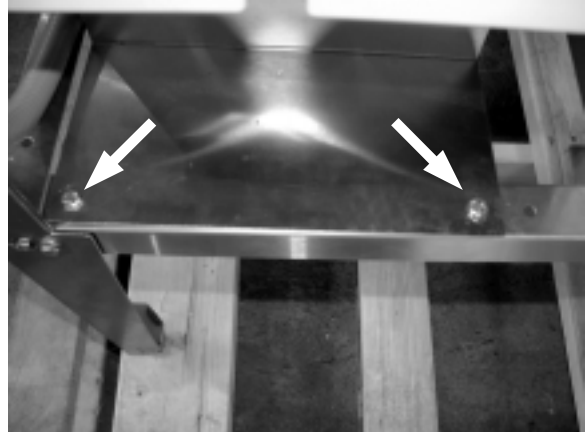
The "GT" dispenser mounting bracket is designed to fit under the dishmachine pan and on top of the stand just in front of the pump motor. A variety of dispensers designed to dispense pot and pan detergent or grease trap chemical treatment can be mounted together or as separate systems on this bracket.

Electrical power (110 VAC) is supplied by a dispenser power terminal strip located in the dishmachine control box.



MOUNTING

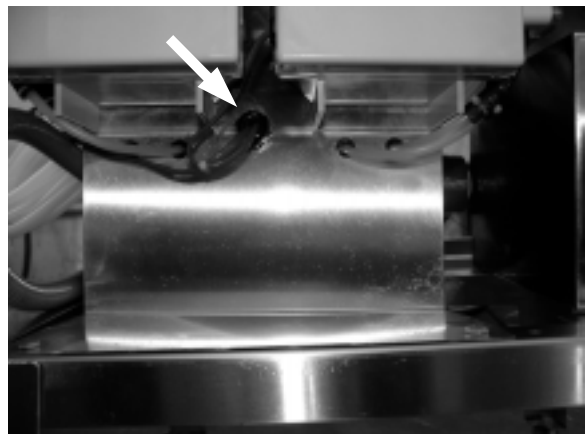
- (1) Mount "L" bracket to front two holes on dishmachine stand using supplied 1/4-20 bolts as shown. Connect the top of the mounting bracket to the pan bracket.



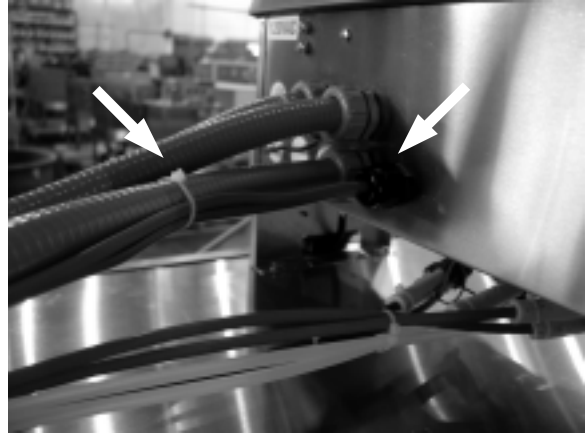
- (2) Cut 3-lead power cord to proper length (8 feet) and wire to primary at dispenser transformer (110 VAC) terminal strip.



- (3) Route 3-lead power cord through dispenser strain relief and push through strain relief on mounting bracket.



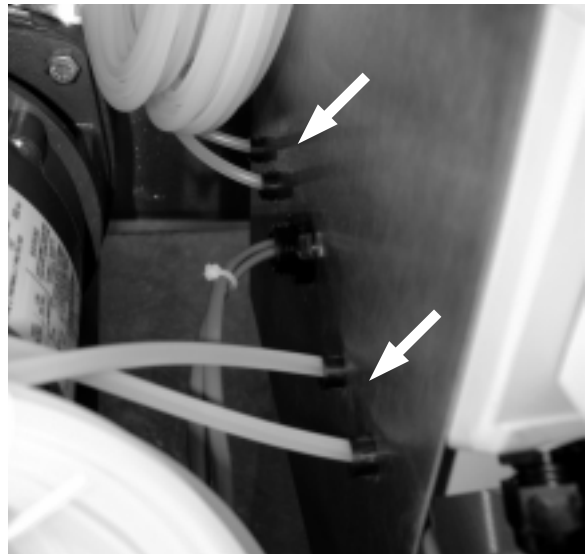
-
- (4) Zip tie power cord to conduit leading to control box and through opening on back of control box.



- (5) Shut off power to the dishmachine! Connect one (or two) power cord(s) to terminal strip on left side panel of control box as shown.



- (6) Route chemical suction and discharge tubing through plastic bushings and connect to chemical supply and product discharge points as required.



- (7) Dispensers are now ready for calibration. Turn on power and consult dispenser installation manual for programming/calibration procedures.

DISCLAIMER

Knight Inc. does not accept responsibility for the mishandling, misuse, or non-performance of the described items when used for purposes other than those specified in the instructions. For hazardous materials information consult label, MSDS, or Knight Inc.

WARRANTY

All Knight controls and pump systems are warranted against defects in material and workmanship for a period of ONE year. All electronic control boards have a TWO year warranty. Warranty applies only to the replacement or repair of such parts when returned to factory with a Knight Return Authorization (KRA) number, freight prepaid, and found to be defective upon factory authorized inspection. Bearings and pump seals or rubber and synthetic rubber parts such as "O" rings, diaphragms, squeeze tubing, and gaskets are considered expendable and are not covered under warranty. Warranty does not cover liability resulting from performance of this equipment nor the labor to replace this equipment. Product abuse or misuse voids warranty.

KNIGHT INC. A Unit of IDEX Corporation

World Headquarters: 20531 Crescent Bay Drive, Lake Forest, CA 92630-8825 (USA) TEL: 949-595-4800, FAX: 949-595-4801, www.knightequip.com

Atlanta Branch: 8111 Technology Dr. NE Covington, GA 30014 USA TEL: 770-787-9400 FAX: 770-787-1155	Toronto Branch: 2880 Argenta Road, Unit 6 Mississauga, Ontario L5N 7X8 Canada TEL: 905-542-2333 FAX: 905-542-1536	London Branch: #15 Brunel Centre Newton Road, Crawley West Sussex UK RH10 9TU TEL: 44-1293-615570 FAX: 44-1293-615585	Sydney Branch: Unit 28, 317-321 Woodpark Rd., Smithfield NSW Australia 2164 TEL: 61-29-725-2588 FAX: 61-29-725-2025	Amsterdam Branch: Marssteden 68 7547 TD Enschede The Netherlands TEL: 31-53-428-58-00 FAX: 31-53-428-58-09	Spain Branch: Port Ginesta, Local 210 08860 Sitges Barcelona Spain TEL: 34-936-342-130 FAX: 34-936-643-477
---	--	--	--	---	---